



HORTICULTURE CATALOG

Markers, Stakes, Tags & Signs





Incorporated in 1987 by Lawrence “Larry” Dugal, DP Industries is a family owned company specializing in manufacturing horticultural labels, stakes and tags for commercial growers, nurserymen and garden enthusiasts. Until his retirement in 2001, Larry established the foundations for the company to grow by recognizing the importance of quality products and customer service. Today, the Dugal family continues to lead the company with that same focus.



At our manufacturing and distribution facility in central Maine, we rely on the most efficient manufacturing methods available and focus our sourcing on environmentally friendly raw materials. To produce our wood garden labels and stakes, we start with logs from locally managed forests harvested by local loggers with oversight from the Maine Forest Service. All wood waste is recovered as either biomass to produce power or firewood to heat the homes of our neighbors. As a result, we can say with pride and confidence our wood products are biodegradable, renewable and sustainable.

From our origins in the wood industry, we have expanded into many other materials. We now offer products made from several types of plastic and metal while maintaining the same core business philosophy. As an example, our economy and molded plastic labels (see page 4) are produced from 90% (average) post consumer recycled styrene.

We are proud to maintain manufacturing facilities in the United States of America and provide support to the local and national economy while offering good jobs for our community. Wherever we can do so competitively, we will continue to source products and raw materials that are “Made in the USA”.

We invite you to browse our catalog.

Thank you for your consideration and... *Happy gardening!*



Table of Contents

Wood Markers and Stakes	3
Economy Plastic Pot Stakes	4
Molded Plastic Pot Stakes	4
Economy Wrap Around Tags	5
Sold Tags	5
Marking Flags & Flagging Tape	5
Thermal Transfer Printable Pot Stakes	6
Thermal Transfer Printable Wrap Around Tags & Basket Tags	6
Metal Markers	7
Aluminum Impression Tags	7
Jute Twine	7
Marking Pens ‘Garden Marker’	7
T-Signs	8
Liquid Chalk	8
Sign Holders - Plastic	9
Sign Holders - Metal	10 & 11
Sign Cards	11
Custom Printed Plastic Stakes & Tags	12 & 13
Custom Printed Wood Stakes	13
Retail products – “Garden Aces”	14
Retail Displays – “Garden Aces”	15

Wood Markers & Stakes

Earth friendly

Size L x W (in.)	Natural	White	Qty./case
3 3/4 x 1	PL3751M	TPL3751M	1000
4 x 5/8	PL458M	TPL458M	1000
5 x 5/8	PL558M	TPL558M	1000
6 x 5/8	PL658M	TPL658M	1000
8 x 5/8	PL858C5	TPL858C5	500
10 x 5/8	PL1058C5	TPL1058C5	500
12 x 5/8	PL1258C5	TPL1258C5	500

PREMIUM COLORS

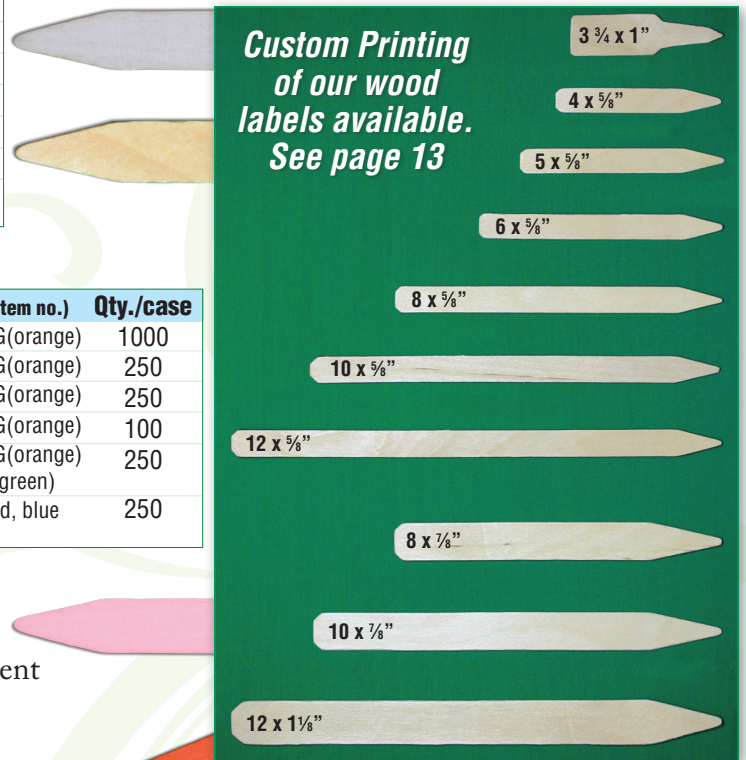
Size L x W (in.)	Item No.	Color prefix (add letter code to front of item no.)	Qty./case
6 x 5/8	***658M	GL(natural), TGL(white), YEL(yellow), ORG(orange)	1000
8 x 7/8	***878C2	GL(natural), TGL(white), YEL(yellow), ORG(orange)	250
10 x 7/8	***1078C2	GL(natural), TGL(white), YEL(yellow), ORG(orange)	250
12 x 1 1/8	***12118C	GL(natural), TGL(white), YEL(yellow), ORG(orange)	100
12 x 1 1/8	***12118C2	GL(natural), TGL(white), YEL(yellow), ORG(orange) RED(red), PNK(pink), BLU(blue), GRN(green)	250
12 x 1 1/8	MLT12118C2	Includes 50ea.-white, yellow, orange, red, blue	250

Our wood labels are produced from New England White Birch veneer, a hardwood which offers an excellent writing surface and greater durability than other wood labels produced from pine. Our coated wood labels provide a longer lasting label and a smoother writing surface. All sizes are available natural or white. Popular sizes are available in natural, white, yellow, orange, pink, red, blue and green.



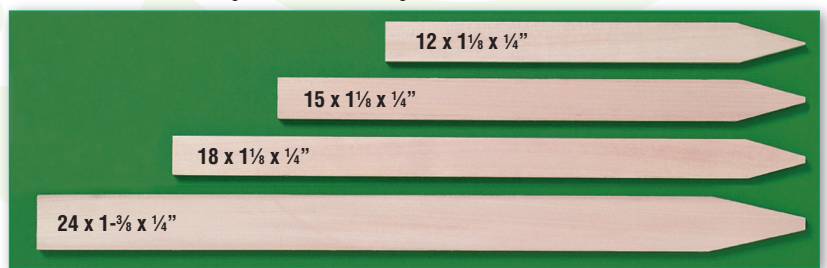
These field stakes are 1/4" thick. This makes for a tough stake which is still biodegradable. The 12", 15" & 18" lengths are 1 1/8" wide and the 24" length is 1 3/8" wide. Packaging is suitable for retail as well as wholesale. These stakes are smooth sawn for an excellent writing surface.

L x W x Thick(in.)	Item No.	Qty./cs.
12 x 1 1/8 x 1/4	FS12118C	100
15 x 1 1/8 x 1/4	FS15118C	100
18 x 1 1/8 x 1/4	FS18118C	100
24 x 1 3/8 x 1/4	FS24138C	100



Renewable
Sustainable
Biodegradable

Heavy Duty Wood Stakes



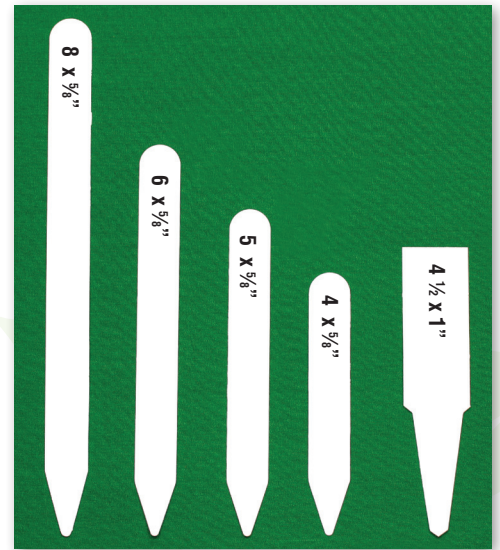
Economy Plastic Pot Stakes

Size L x W (in.)	Item No.	Thickness (in.)	Qty./case
4 x 5/8	TC458M	.024	1000
5 x 5/8	TC558M	.024	1000
6 x 5/8	TC658M	.030	1000
8 x 5/8	TC858M	.030	1000
4 1/2 x 1	SL451M	.015	1000



Our plastic plant labels are die-cut from high impact recycled styrene which gives them the smoothest writing surface available. Try marking on these with our “*Garden Marker*” (Item No. GM77BLK or GM08BLK on page 7) for a long lasting label that is easy to use. The UV resistant, waterproof ink in our “*Garden Marker*” is easily removable with rubbing alcohol when used with these labels. Sizes are ideal for pots or flats and are one of the most economical ways to label plants.

Note: 1” wide labels are sold in rolls. 5/8” wide labels are sold loose and packed 1000 per case.

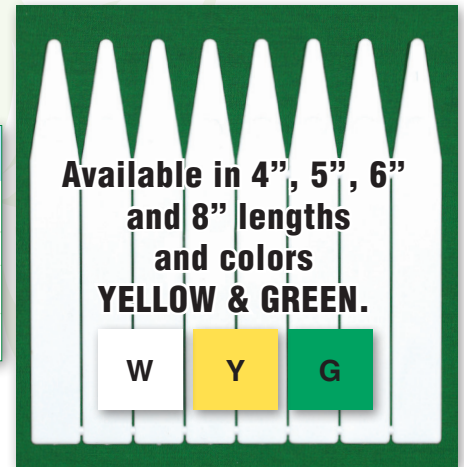


Molded Plastic Pot Stakes

Size L x W (in.)	Thickness (in.)	Item # (add appropriate color code)	Available Color Codes	Qty. per case
4 x 5/8	.042	IM458M-(color code)	W(white), Y(yellow), G(green), B(blue), O(orange), R(red), P(pink)	1000
5 x 5/8	.042	IM558M-(color code)	W(white), Y(yellow), G(green)	1000
6 x 5/8	.042	IM658M-(color code)	W(white), Y(yellow), G(green), B(blue), O(orange), R(red), P(pink)	1000
8 x 5/8	.055	IM858C5-(color code)	W(white), Y(yellow), G(green)	500



These plant labels are molded from recycled polystyrene in sets of 8 each offering the user greater convenience when writing. Using our UV resistant “*Garden Marker*” (Item No. GM77BLK or GM08BLK on page 7) with these labels provides a permanent labeling solution, that is also reusable! That’s right, the permanent, UV ink in our pen can be easily removed with rubbing alcohol or common hand sanitizers. Sizes are ideal for pots and flats.



Economy Wrap Around Tags



Description	Item No.	Qty.
5" x 5/8" vinyl tree tag	TT558M	1000/ Roll
7" x 5/8" vinyl tree tag	TT758M	1000/ Roll
3 1/2" x 5/8" plastic tag w/ twist tie	PTT3558M	1000/ Case
3 1/2" x 5/8" wood tag w/ twist tie	WTT3558M	1000/ Case

Try our "*Garden Marker*" on page 7 along with these tree tags for a long lasting fade resistant tag. Vinyl tree tags are sold in rolls and are designed for easy marking. Our plastic and wood tags use wire twist ties for quick, simple application.

Note: all wire tree tags are sold with plastic coated wires unattached.

Sold Tags



Size	Item No.	Stock Colors	Material	Qty./roll
7" x 3/4"	ST734R	Red	.012 LDPE	1000
7" x 3/4"	ST734W	White	.012 LDPE	1000

Sold tags are handy all around the nursery or farm. Space is available on these tags to write a customer name, date or other important information.

Stock Colors:

W

R

Marking Flags



Our marking flags are Made in the USA within industry standards. All flags are 4 mil vinyl with a 15.5 gauge steel staff for long term durability. Flagging tape is 3 mil thickness and available in 6 standard colors.



FLAGGING TAPE

Size	Item No.	Color Code	Material	Qty./case
1 3/16" x 300 ft. - standard colors	FT300-(add color code)	bl, or, ye, rd, gr, pk	taffeta -emb.PVC	12 rolls

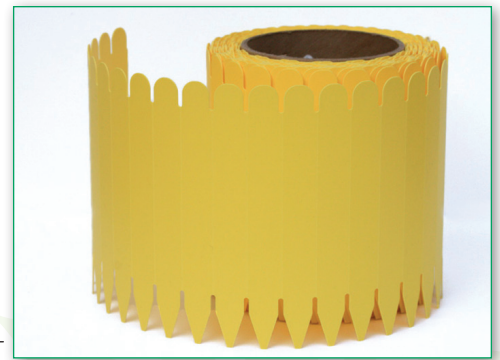
FLAGS

Size	Item No.	Color Code	Material	Qty./case
4" x 5" w/21" wire - standard colors	MF2145-(add color code)	rd, wh, yl, or, bl	4 mil vinyl	1000
4" x 5" w/21" wire - fluorescent colors	MF2145F-(add color code)	fl pk, fl lm	4 mil vinyl	1000

Plastic Pot Stakes

Thermal transfer printable

Size	Item No.	Color Code	Material	Qty./roll
5" x ¾"	POT534	W or Y	.020 styrene	2000
5" x 1"	POT51	W or Y	.020 styrene	1000
6" x 1"	POT61	W or Y	.020 styrene	1000



Stock Colors:

W

Y



These plastic pot labels are designed for proprietary thermal transfer printers, but can also be hand written on with our "*Garden Marker*" pens. We also custom print these labels with very low minimums. See page 12 for more information on how custom printed labels can add a professional look to your nursery or garden center.

Premium colors (*require extend lead time for shipping*)

Blue
bl

Lavender
la

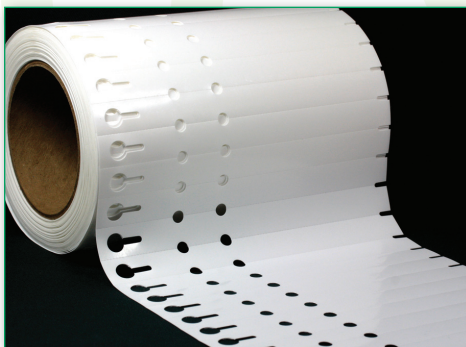
Orange
or

Pink
pi

Red
re

Wrap-Around & Basket Tags

Thermal transfer printable



Size	Description	Item No.	Material	Qty./roll
7" x ¾"	Wrap Around Tag	WRAP734 (add color code)	.012 LDPE	2000
9" x 1"	Wrap Around Tag	WRAP91 (add color code)	.012 LDPE	1000
2" x 5"	Hanging basket tag	BT52W	.012 LDPE	1000

Wrap-around Tags

Use our wrap-around tags in your proprietary thermal transfer printer or see page 12 to have us custom print these tags for you. Also use our "*Garden Marker*" on page 7 to write on the smooth polyethylene surface.

Premium colors (*require extend lead time for shipping*)

Blue
bl

Gold
go

Lavender
la

Orange
or

Pink
pi

Red
re

Green
gr

Lime
lm

Tan
tn

Stock Colors

W

Y

Basket Tags

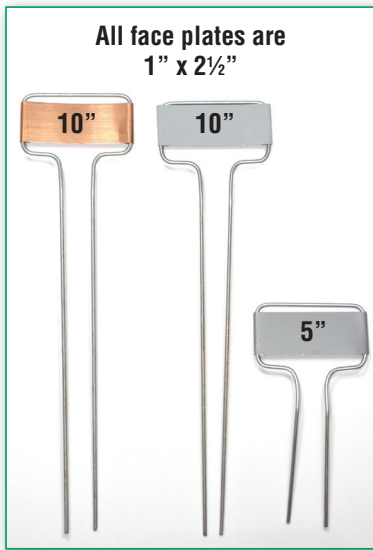
Our basket tags are also designed to fit proprietary thermal transfer printers with a minimum 5" wide feed. They also can be written on with our "*Garden Marker*" (see page 7) for UV resistant, long lasting identification. For a more professional look, go to page 12 and see how we can custom print these tags for you.

Stock Colors

W



Metal Markers



Description	Item No.	Qty./case
5" metal stake w/ zinc plate	MM5	120
10" metal stake w/ zinc plate	MM10	120
10" metal stake w/ copper plate	MM10C	120

Our metal stakes are ideal for permanent labeling. Constructed from galvanized steel wire with a zinc or copper writing surface, these stakes are rust and corrosion resistant. The soft metal face plates can be embossed with a die set. Our “*Garden Markers*” below also works well on the metal surfaces. The 10 inch sizes are also available in retail packaging, see page 14.



Aluminum Impression Tag



Item No.	Description	Qty./case
IMP1338	Aluminum Impression Tag - 1" x 3 3/8"	100
IMP158	Aluminum Impression Tag - 1 5/8" x 3 3/4"	100

Simply write on one or both sides with a ballpoint pen, pencil, or other similar tool, to impress an indelible message into the tag. The durable finish does not oxidize, even with prolonged exposure to weather, most chemicals, heat, and dirt. This means your message is permanent and remains legible for years in any environment. Light-weight impression tag can be wired, stapled, nailed, taped, or glued to many objects. Unattached aluminum wire ties are included with each order of impression tag at no additional charge.



Jute Twine

Item No.	Description	Qty./case
GJH219-6	Heavy weight, green jute twine 200 ft./spool	6 spools

Heavy weight. Biodegradable - safe to compost. Ideal for vines and climbing plants, flower arranging, general home and garden use.

Marking Pens

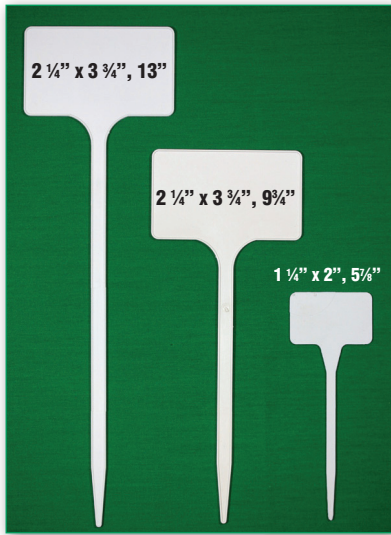


Item No.	Description	Qty./case
GM08BLK	Aluminum barrel 'Garden Marker' 0.8 mm tip	12
GM77BLK-25	Plastic barrel 'Garden Marker' 1.2 mm tip	25
GM77BLK-100	Plastic barrel 'Garden Marker' 1.2 mm tip	100

Finally a line of marking pens that will last! Our “*Garden Markers*” are fast drying, waterproof and contain ultraviolet filters for maximum fade resistance. These pens are xylene free which makes them environmentally friendly. Furthermore, they write on wood, plastic, metal, glass, porcelain and many other materials.



Flat T-Signs



Writing Area (HxW), Overall height	Item No.	Color Code	Qty./cs.
1 1/4" x 2", 5 7/8"	TL5	W, Y or B	250
2 1/4" x 3 3/4", 9 3/4"	TL10	W, Y or B	100
2 1/4" x 3 3/4", 13"	TL13	W, Y or B	100

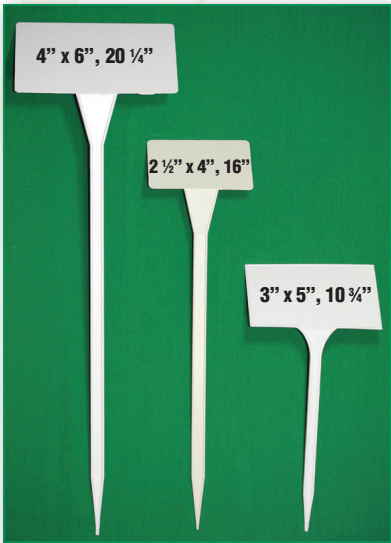
Our many varieties of T-labels provide cost effective signage for garden centers and nurseries. For species identification or POP applications, these T's are easy to write on with our "Garden Marker" (Item No. GM77BLK or GM08BLK on page 7) and provide UV resistant, waterproof labeling. Also try liquid chalk pens (bottom page).



Stock Colors:

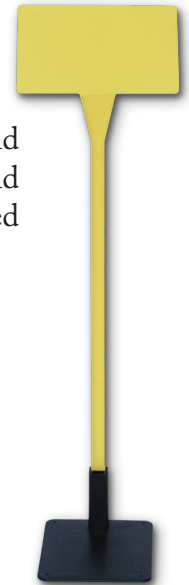


Angled T-Signs



Writing Area (HxW), Overall height	Item No.	Color Code	Qty./cs.
3" x 5", 10 3/4"	AT10	W, Y or B	50
2 1/2" x 4", 16"	AT16	W, Y or B	50
4" x 6", 20 1/4"	AT21	W, Y or B	25
fits all angled T-Signs	BASE	Black	25

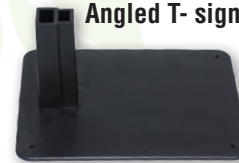
Angled T-signs are ideal for applying pressure sensitive labels or writing directly on them with our "Garden Marker" pens (on page 7). Black signs offer a distinctive look when used with our "Liquid Chalk" marking pens (Item No. LC05, see below). When "Liquid Chalk" is used, it is rain and weather resistant, but it can be wiped clean with simply a wet cloth.



Stock Colors:



BASE- fits all Angled T-signs



Liquid Chalk

Item No.	Description	Qty./pkg
LC05WHT	5mm Bullet tip - 3pk, white only	3
LC05RGB	5mm Bullet tip - 3pk, Red, Green & Blue	3
LC05-9PK	5mm Bullet tip - 9pk, multi-colors*	9



* Multi-color 9 pack includes pink, red, orange, yellow, green, blue, violet, black and white.

Liquid Chalk markers are specifically designed to work in combination with our plastic signs and stakes. When used together they provide a distinctive look in the retail nursery or garden center. The liquid chalk will not come off in rain or wet greenhouse conditions, but it can be removed by simply wiping with a damp cloth!

Sign Holders-Plastic



**7" x 11" Straight Top
Holds Cards on 2 Sides**



**5" x 7" Straight Top
Holds Cards on 2 Sides**

Sign dimensions (HxW), Overall height	Item No.	Qty./cs.
5 x 7 Straight top, 22" tall	CS57	10
5 x 7 Angled top, 22" tall	CS57A	10
7 x 11 Straight top, 22" tall	CS711	10
7 x 11 Angled top, 22" tall	CS711A	10

Our sign holders are made from injection molded high impact plastic and are ideal for POP signs around the nursery or garden center. Choose from 5 x 7 or 7 x 11 card holders. The CS series are three piece units including the holder, stem and base. Item numbers ending in "A" offer the angled top holder for easier viewing while the straight top holders are able to hold a card sign on 2 sides. Look to page 11 for card signs that fit in these holders.



**7" x 11"
Angled Top**



**5" x 7"
Angled Top**



Economy Sign Holders



**Item Number
ES10**



**Item Number
ES20**

Sign dimensions (HxW), Overall height	Item No.	Qty./cs.
Economy Sign Holder for 4" x 5" (13" stem)	ES10	25
Economy Sign Holder for 5" x 7" (13" stem)	ES20	25

ES series is an even more economical sign holder. A 4" x 5" card is recommended for the ES10 and a 5" x 7" card is best for the ES20. See page 11 for the card that is right for your application.

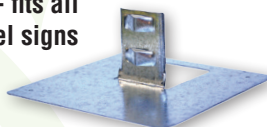


Sign Holders - Metal



Metal sign holders offer outstanding durability. Stems are pointed for easy insertion into the ground or large pots. Also a universal base is available to fit all sizes. See page 11 for sign cards that fit these holders.

Steel Base - fits all steel signs



Size - (H) x (W)	Item No.	Material	Qty./Case
4" x 5" w/18" stem	MS4518	galvanized steel	10
5" x 7" w/18" stem	MS5718	galvanized steel	10
5" x 7" w/30" stem	MS5730	galvanized steel	10
7" x 11" w/30" stem	MS71130	galvanized steel	10
universal base	MSBASE	galvanized steel	10

One-piece Metal Sign Holders

The one-piece sign holders offer very economical options for garden centers and nurseries. These holders are shipped completely assembled including the base, stem and face plate. Bases are packaged flat with the stem to save shipping costs, but are designed to be easily bent up prior to use. See page 11 for sign cards to fit these holders.



OMS57

Size - (H) x (W)	Item No.	Material	Qty./Case
5" x 7" one piece w/base	OMS57	galvanized steel	10
7" x 11" one piece w/base	OMS711	galvanized steel	10



OMS711

Table Top Sign Holders



Table top sign holders are one of the most economical options for garden center signage. Use our sign cards below to complete your needs. These are inexpensive, professional, reusable solutions for all retail spaces.

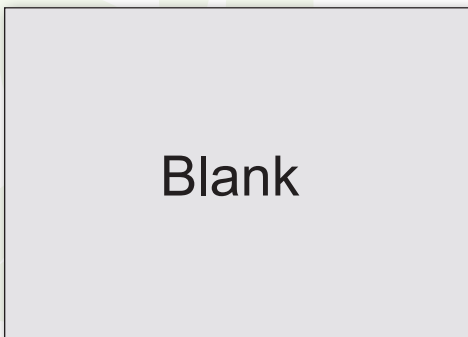
Size - (H) x (W)	Item No.	Material	Qty./Case
5" x 7" table top	TMS57	galvanized steel	10
7" x 11" table top	TMS711	galvanized steel	10

Sign Cards-Vinyl



Compatible with Sign Holders on page 9, 10 and 11, these vinyl cards can be marked with our "Garden Marker" pens (page 7). It's unique all-weather, fade resistant ink can be removed with rubbing alcohol or common hand sanitizer for reuse.

Sign dimensions - (H) x (W)	Item No.	Material	Qty./cs.
4 x 5 Blank	C54-000	.010 vinyl	25
4 x 5 "Sale"	C54-100	.010 vinyl	25
4 x 5 "Plant Info"	C54-200	.010 vinyl	25
5 x 7 Blank	C57-000	.010 vinyl	25
5 x 7 "Sale"	C57-100	.010 vinyl	25
5 x 7 "Plant Info"	C57-200	.010 vinyl	25
7 x 11 Blank	C711-000	.010 vinyl	25
7 x 11 "Sale"	C711-100	.010 vinyl	25
7 x 11 "Plant Info"	C711-200	.010 vinyl	25



BOTANICAL NAME _____
COMMON NAME _____

CLASSIFICATION	TYPE	BLOOMS	HARDINESS
<input type="checkbox"/> SHRUB	<input type="checkbox"/> EVERGREEN	<input type="checkbox"/> SPRING	<input type="checkbox"/> HARDY
<input type="checkbox"/> TREE	<input type="checkbox"/> SEMI	<input type="checkbox"/> SUMMER	<input type="checkbox"/> HALF-HARDY
<input type="checkbox"/> VINE	<input type="checkbox"/> DECIDUOUS	<input type="checkbox"/> FALL	

EXPOSURE

SUN
 MORNING SUN
 SHADE

HEIGHT

GROUNDCOVER
 LOW
 MEDIUM
 TALL

COLOR OF FLOWERS

BERRIES YES NO

\$ _____

For Best Growing Conditions Use

Custom Printed Stakes & Tags

Give your nursery or farm a professional look by using printed pot labels and tags. List species, pricing, bar codes, or promotional information. Just email your logo or text information to sales@dpind.com and we will return a proof by email or fax for your approval. Multiple species information can be provided in a spreadsheet format to save on set-up fees. Electronic logo art should be black and white only with no shading at a minimum 150 dpi. See imprint area for the label or tag you have chosen. Minimum order 1,000 labels.



Stock Colors:

W

Y

Premium colors (require extend lead time for shipping)



POT STAKES

Size	Item No.	Material	Qty./roll	Imprint Area - (H) x (W)
5" x 3/4"	POT534 (add color code)-CP	.020 styrene	2000	5/8" x 4"
5" x 1"	POT51 (add color code)-CP	.020 styrene	1000	7/8" x 4"
6" x 1"	POT61 (add color code)-CP	.020 styrene	1000	7/8" x 4 3/4"

- Logo art should be black & white only
 - 150 dpi resolution or higher.
 - EPS or PDF
- Vector line art for optimum printing.

First art proof by email or fax is FREE



BASKET TAGS



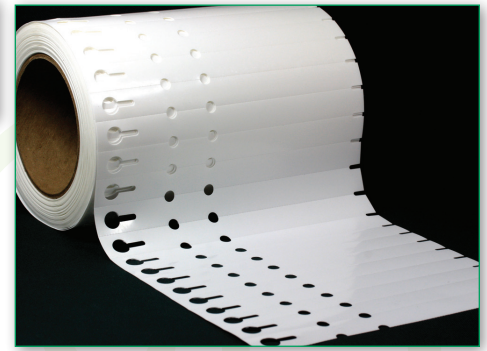
Stock Colors:

W

Size	Description	Item No.	Material	Qty./roll	Imprint Area - (H) x (W)
2" x 5"	Hanging basket tag	BT52W-CP	.012 LDPE	1000	1 3/4" x 3 1/4"

WRAP-AROUND TAGS

Size	Item No.	Material	Qty./roll	Imprint Area - (H) x (W)
7" x 3/4"	WRAP734(add color code)	.012 LDPE	2000	5/8" x 3 1/2"
9" x 1"	WRAP91(add color code)	.012 LDPE	1000	7/8" x 5"

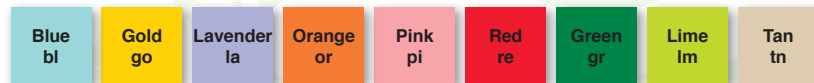


Stock Colors:

W

Y

Premium colors (require extend lead time for shipping)



Printed Wood Stakes



Available:
White
Orange
Yellow
Natural

Size L x W (in.)	Item No.	Imprint Area
3 3/4" x 1" wood bedding stake	***3751-P	3/4" x 1 3/4"
8" x 7/8" wood garden stake	***878-P	5/8" x 6"
10" x 7/8" wood garden stake	***1078-P	5/8" x 8"
12" x 1 1/8" wood garden stake	***12118-P	7/8" x 10"

*** Item prefix is GL for natural, TGL for white, YEL for yellow and ORG for orange.

DP offers 4 sizes of custom printed wood stake. The 3 3/4" x 1" bedding stake, 8" x 7/8", 10" x 7/8" & 12" x 1 1/8" garden stake are available with text and logo of your choice. List species, pricing or promotional information on our natural or colored labels. Minimum order 1,000 labels.

- Logo art should be black & white only •150 dpi resolution or higher
- EPS or PDF • Vector line art for optimum printing

Standard ink colors are blue, red, green, brown, and black.

Note: Ink color appearance can vary when printed on colored labels.



Retail Products

Most products available on hanging merchandising clip strips

NATURAL WOOD STAKES

Description	Repack cases		Hanging Clip Merchandisers	
	Item No.	Pkgs./case	Item No.	Pkgs./case
4" x 5/8" natural wood stakes - 24/pkg.	WC458	20	HWC458	24
6" x 5/8" natural wood stakes - 24/pkg.	WC658	20	HWC658	24
8" x 7/8" natural wood stakes - 12/pkg.	WC878	20	HWC878	24
12" x 1 1/8" natural wood stakes - 12/pkg.	WC12118	20	HWC12118	24

PLASTIC LABELS

Description	Repack cases		Hanging Clip Merchandisers	
	Item No.	Pkgs./case	Item No.	Pkgs./case
6" x 5/8" plastic pot stakes- 24/pkg.	PD658	20	HPD658	24
5 1/2" x 2 1/4" T-stakes - 10/pkg.	TL510	20	HTL510	24

METAL STAKES, TWINE & PENS

Description	Repack cases		Hanging Clip Merchandisers	
	Item No.	Pkgs./case	Item No.	Pkgs./case
10" metal stake with zinc plate - 8/pkg.	MM1008	20	HMM1008	24
10" metal stake with copper plate - 8/pkg	MC10	20	HMC10	24
Jute Twine - 3ply heavy wt., green, 200 ft.	GJH219-R	20	Not available	
'Garden Marker' pen - med tip	GM77BLK-R	20	HGM77BLK-R	24



HWC658



Most of our Garden Aces™ are available on preloaded hanging merchandiser strips. These provide added sales opportunities in Lawn & Garden without taking up valuable shelf space. Strips are ideal for cross merchandising on seed racks, bulbs racks or with garden tools and gloves. See individual SKU's on page 14 for order details.

FLOOR DISPLAY

Our seed starting floor display includes 364 units with a total retail value over \$1400, in only 1.5 sq. feet of retail space. This is an excellent cross merchandiser for seed racks, or place this attractive display near the register or store entrance.



SP364

Item No. SP364 contains:	
Rotary Floor Display	Pkgs./disp.
4" Wood Stakes - 24/pkg.	80
6" Plastic Stakes - 24/pkg.	72
'Garden Marker' Pen - 1/pkg.	32
12" Wood Stakes - 12/pkg.	40
10" Metal/Zinc Stakes - 8/pkg.	20
10" Copper Stakes - 8/pkg.	20
Jute Garden Twine - 200'/pkg.	40
5" Plastic T-Stakes - 10/pkg.	60

**Includes only
our best selling SKU's**



WC56

SHELF DISPLAYS

The Garden Aces™ shelf merchandiser is simple and easy. It ships completely assembled. Just open the ship carton and place it on the shelf. The j-hook design gives maximum product facing whether it is full or near empty.



PD52

Item No.	Description	Pkgs./display
WC56	20 pkgs. each 4" & 6", 16 each 8" natural wood stakes	56
PD52	26 pkgs. 6" plastic stakes, 12 pkgs. 5" T-stakes, 14 pens	52



Distributed By:

